

CAR PARK WASTE SUMP
 SIZE: 2m X 1.5m X 2.5m(d)
 2 NOS WASTE WATER SUMP PUMP
 (1 NO. DUTY & 1 NO. STANDBY)
 FLOW RATE : 3 litres/sec EACH
 PUMP HEAD : 6m EACH

LEGEND	DESCRIPTION
	2.0 kg ABC DRY CHEMICAL FIRE EXTINGUISHER WITH APPROVED PSB LABEL
	4.0 kg ABC DRY CHEMICAL FIRE EXTINGUISHER WITH APPROVED PSB LABEL
	FIRE ALARM & CALL MANUAL
	FIRE HOSE REEL
	DRY RISER WITH 2 NOS. OF STANDBY HOSE
	BREECHING INLET
	FIRE FIGHTING ACCESS
	1/2 HOUR FIRE RATED DOOR W/ PSB LABEL
	1 HOUR FIRE RATED DOOR W/ PSB LABEL
	2 HOUR FIRE RATED DOOR W/ PSB LABEL
	EXIT SIGN WITH DIRECTIONAL SIGN (COME WITH SELF BATTERY PACK)
	EXIT SIGN (COME WITH SELF BATTERY PACK)
	2 HOUR FIRE STOP

AS BUILT DRAWING SUBMISSION

DATE SUBMITTED 30 MAR 17	REFERENCE NO.
------------------------------------	---------------

This check is made to review the general conformance on the design intention, specifications and drawings of the project. This does not relieve the Contractor and Sub-Contractor of his contractual responsibilities to confirm and correlate dimensions on site, select fabrication process and techniques of construction, coordinate his work with all other trades and execute his work in accordance with the best standard practice and Local Building Regulations.

P & T CONSULTANTS PTE LTD, ARCHITECT

DATE RECEIVED:	DATE RETURNED:
CHECKED BY:	SUBMISSION NO.
<input type="checkbox"/> Approved on Above Conditions	<input type="checkbox"/> Commented and Approved on Above Conditions
<input type="checkbox"/> Resubmit	<input type="checkbox"/> Comments on Architectural Aspect only
<input type="checkbox"/> Not in Order	<input type="checkbox"/> No Comment

P & T CONSULTANTS PTE LTD, C & S

DATE RECEIVED:	DATE RETURNED:
CHECKED BY:	SUBMISSION NO.
<input type="checkbox"/> Approved on Above Conditions	<input type="checkbox"/> Commented and Approved on Above Conditions
<input type="checkbox"/> Resubmit	<input type="checkbox"/> Comments on Architectural Aspect only
<input type="checkbox"/> Not in Order	<input type="checkbox"/> No Comment

UNITED PROJECT CONSULTANTS PTE LTD

DATE RECEIVED:	DATE RETURNED:
CHECKED BY:	SUBMISSION NO.
<input type="checkbox"/> Approved on Above Conditions	<input type="checkbox"/> Commented and Approved on Above Conditions
<input type="checkbox"/> Resubmit	<input type="checkbox"/> Comments on Architectural Aspect only
<input type="checkbox"/> Not in Order	<input type="checkbox"/> No Comment

FD CHAPMAN PTE LTD

DATE RECEIVED:	DATE RETURNED:
CHECKED BY:	SUBMISSION NO.
<input type="checkbox"/> Approved on Above Conditions	<input type="checkbox"/> Commented and Approved on Above Conditions
<input type="checkbox"/> Resubmit	<input type="checkbox"/> Comments on Architectural Aspect only
<input type="checkbox"/> Not in Order	<input type="checkbox"/> No Comment

SHOP DRAWING ARE CHECKED FOR HIGHLIGHTED AREAS ONLY. UNLESS HIGHLIGHTED FOR DEVIATION FROM WORKING DRAWINGS, WE ASSUME THAT ALL DESIGN INTENTS & DIMENSIONAL CO-ORDINATIONS ARE COMPLIED WITH.

ARCHITECT
P&T CONSULTANTS PTE LTD
 24 RAFFLES PLACE
 #23-00 CLIFFORD CENTRE
 SINGAPORE 048621
 TEL : 6535 2011
 FAX : 6535 1283

CIVIL & STRUCTURAL ENGINEERS
P&T CONSULTANTS PTE LTD
 24 RAFFLES PLACE
 #13-03 CLIFFORD CENTRE
 SINGAPORE 048621
 TEL : 6535 2011
 FAX : 6535 1283

MECHANICAL & ELECTRICAL ENGINEERS
UNITED PROJECT CONSULTANTS PTE LTD
 432 BALESTIR ROAD
 #02-444, PUBLIC MANSION
 SINGAPORE 329813
 TEL : 6225 3900
 FAX : 6253 4106

INTERIOR DESIGN CONSULTANTS

 7030 ANG MO KIO AVE 5
 #08-84 NORTHSTAR@AMK
 SINGAPORE 569880
 TEL : 6570 6377
 FAX : 6570 6355

MAIN CONTRACTOR
QING FENG CONSTRUCTION PTE LTD

 31 MANDAI ESTATE
 #07-09, INNOVATION PLACE
 TEL: (65) 6509 8936
 FAX: (65) 6509 8526
 Email: office@qingfeng.com.sg

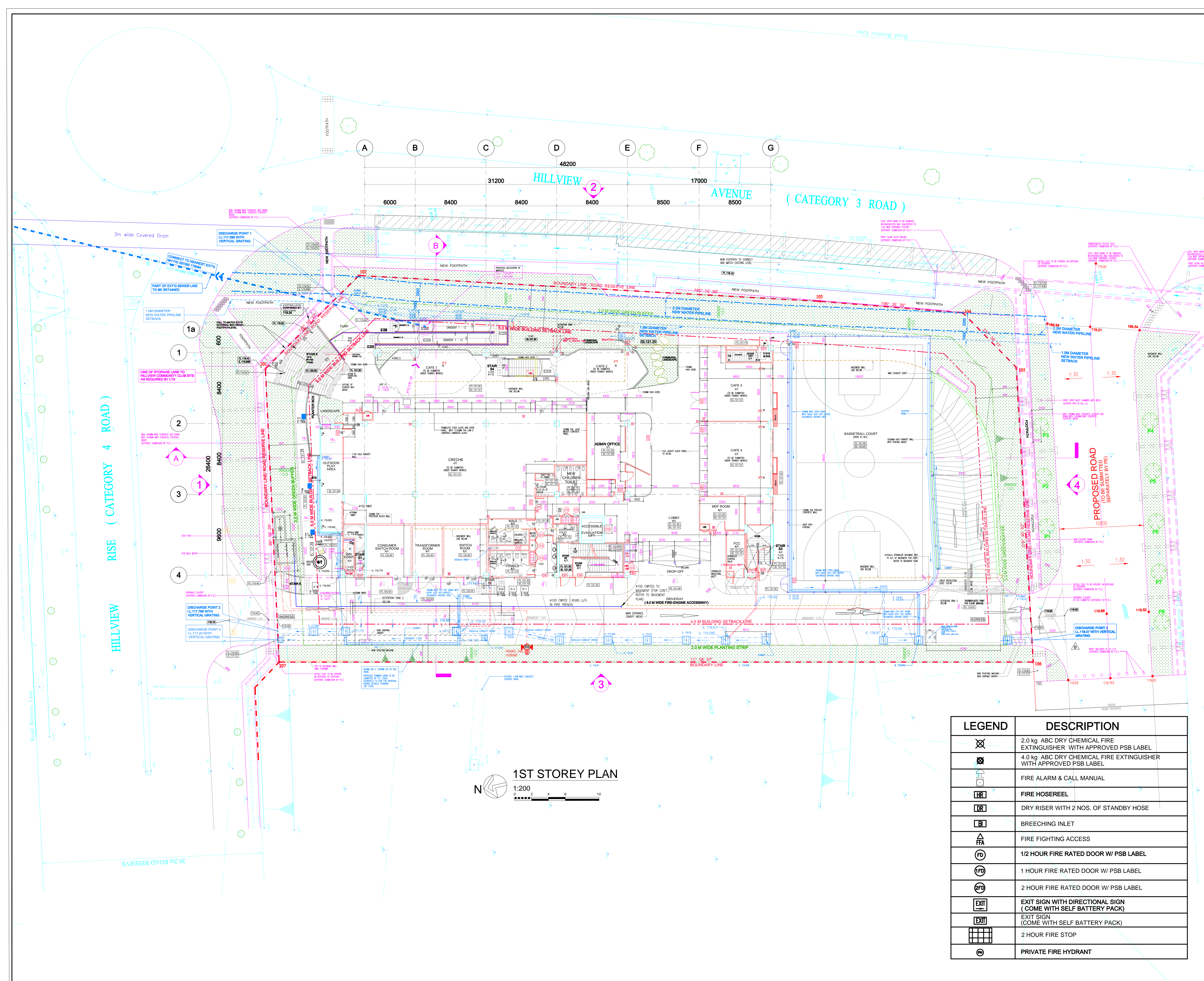
SUB CONTRACTOR

PROJECT TITLE
 PROPOSED ERECTION OF A 4-STORY COMMUNITY CLUB WITH A BASEMENT CARPARK ON LOT 5013V MK10 AT HILLVIEW AVENUE (BUKIT BATOK PLANNING AREA)

DRAWING TITLE
BASEMENT PLAN
 (AS BUILT DRAWING ON 30.03.17)

PROJECT NUMBER S 1170	DRAWING NUMBER WD-FPB1
SCALE 1:150	DATE 30 MAR 2017
DRAWN HH	CHECKED CHIA

THE OWNERSHIP OF THE COPYRIGHT IN THIS DRAWING IS RETAINED BY P&T CONSULTANTS PTE LTD WHOSE CONSENT MUST BE SOUGHT BEFORE ANY USE OR REPRODUCTION OF THE DRAWING OR ANY PART THEREOF CAN BE MADE.



1ST STOREY PLAN
1:200

LEGEND	DESCRIPTION
	2.0 kg ABC DRY CHEMICAL FIRE EXTINGUISHER WITH APPROVED PSB LABEL
	4.0 kg ABC DRY CHEMICAL FIRE EXTINGUISHER WITH APPROVED PSB LABEL
	FIRE ALARM & CALL MANUAL
	FIRE HOSEREEL
	DRY RISER WITH 2 NOS. OF STANDBY HOSE
	BREECHING INLET
	FIRE FIGHTING ACCESS
	1/2 HOUR FIRE RATED DOOR W/ PSB LABEL
	1 HOUR FIRE RATED DOOR W/ PSB LABEL
	2 HOUR FIRE RATED DOOR W/ PSB LABEL
	EXIT SIGN WITH DIRECTIONAL SIGN (COME WITH SELF BATTERY PACK)
	EXIT SIGN (COME WITH SELF BATTERY PACK)
	2 HOUR FIRE STOP
	PRIVATE FIRE HYDRANT

AS BUILT DRAWING SUBMISSION

DATE SUBMITTED: 30 MAR 17 REFERENCE NO.

This check is made to review the general conformance on the design intention, specifications and drawings of the project. This does not relieve the Contractor and Sub-Contractor of his contractual responsibilities to confirm and correlate dimensions on site, select fabrication process and techniques of construction, coordinate his work with all other trades and execute his work in accordance with the best standard practice and Local Building Regulations.

P&T CONSULTANTS PTE LTD, ARCHITECT

DATE RECEIVED: DATE RETURNED:
CHECKED BY: SUBMISSION NO.
 Approved on Above Conditions Commented and Approved on Above Conditions
 Resubmit Comments on Architectural Aspect only
 Not in Order No Comment

P & T CONSULTANTS PTE LTD, C & S

DATE RECEIVED: DATE RETURNED:
CHECKED BY: SUBMISSION NO.
 Approved on Above Conditions Commented and Approved on Above Conditions
 Resubmit Comments on Architectural Aspect only
 Not in Order No Comment

UNITED PROJECT CONSULTANTS PTE LTD

DATE RECEIVED: DATE RETURNED:
CHECKED BY: SUBMISSION NO.
 Approved on Above Conditions Commented and Approved on Above Conditions
 Resubmit Comments on Architectural Aspect only
 Not in Order No Comment

FD CHAPMAN PTE LTD

DATE RECEIVED: DATE RETURNED:
CHECKED BY: SUBMISSION NO.
 Approved on Above Conditions Commented and Approved on Above Conditions
 Resubmit Comments on Architectural Aspect only
 Not in Order No Comment

SHOP DRAWING ARE CHECKED FOR HIGHLIGHTED AREAS ONLY. UNLESS HIGHLIGHTED FOR DEVIATION FROM WORKING DRAWINGS, WE ASSUME THAT ALL DESIGN INTENTS & DIMENSIONAL CO-ORDINATIONS ARE COMPLIED WITH.

ARCHITECT
P&T CONSULTANTS PTE LTD
24 RAFFLES PLACE #23-03 CLIFFORD CENTRE SINGAPORE 048621 TEL: 6535 2011 FAX: 6535 1283

CIVIL & STRUCTURAL ENGINEERS
P&T CONSULTANTS PTE LTD
24 RAFFLES PLACE #13-03 CLIFFORD CENTRE SINGAPORE 048621 TEL: 6535 2011 FAX: 6535 1283

MECHANICAL & ELECTRICAL ENGINEERS
UNITED PROJECT CONSULTANTS PTE LTD
432 BALEISTR ROAD #02-444, PUBLIC MANSION SINGAPORE 329813 TEL: 6225 3900 FAX: 6253 4106

INTERIOR DESIGN CONSULTANTS
 7030 ANG MO KIO AVE 5 #08-04 NORTHSTAR@AMK SINGAPORE 569880 TEL: 6570 6377 FAX: 6570 6355

MAIN CONTRACTOR
 QING FENG CONSTRUCTION PTE LTD
31 MANDAI ESTATE #07-09, INNOVATION PLACE TEL: (65) 6509 8936 FAX: (65) 6509 8526 Email: office@qingfeng.com.sg

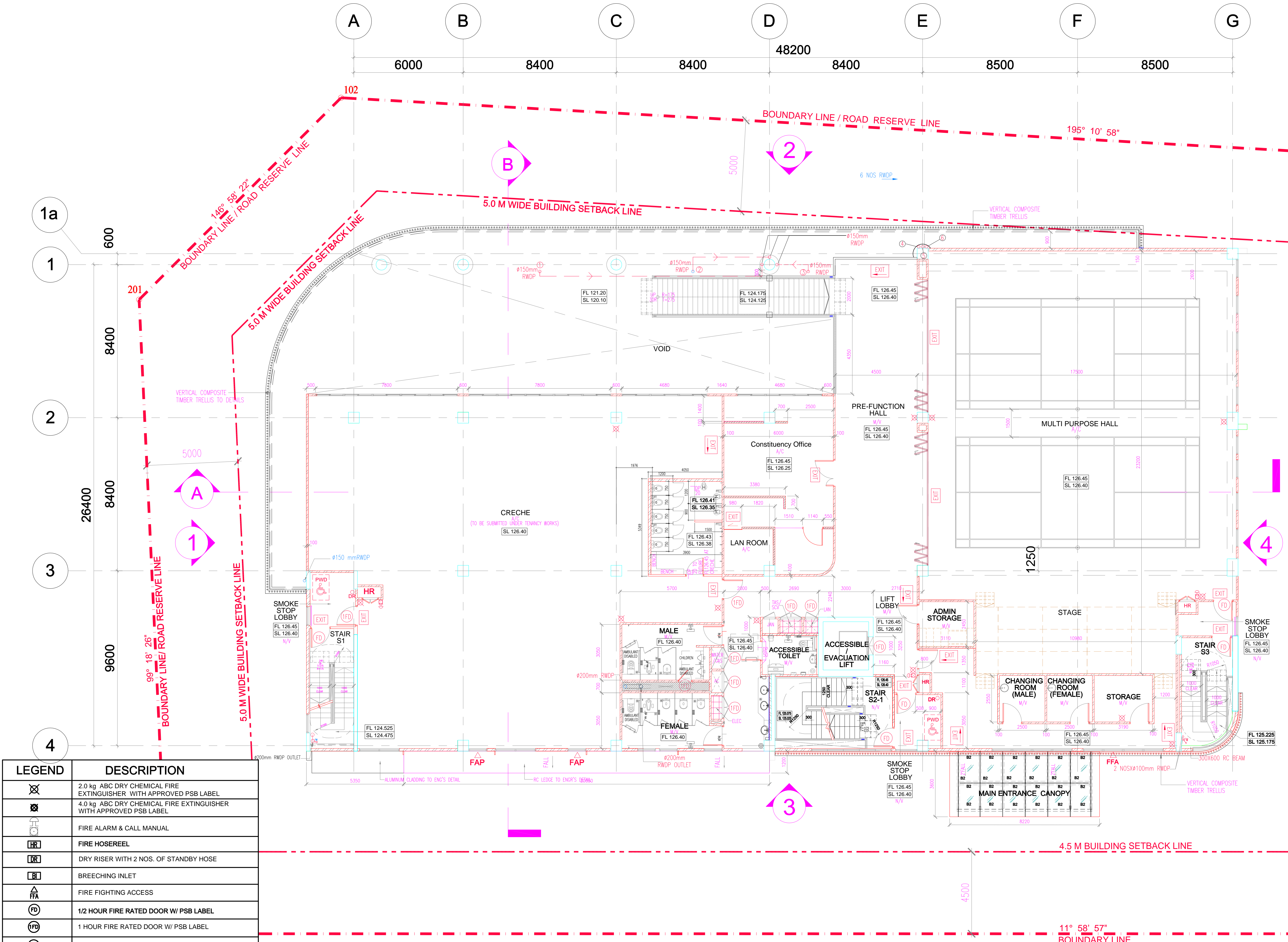
SUB CONTRACTOR

PROJECT TITLE
PROPOSED ERECTION OF A 4-STOREY COMMUNITY CLUB WITH A BASEMENT CARPARK ON LOT 5013V MK10 AT HILLVIEW AVENUE (BUKIT BATOK PLANNING AREA)

DRAWING TITLE
1ST STOREY PLAN (AS BUILT DRAWING ON 30.03.2017)

PROJECT NUMBER S 1170	DRAWING NUMBER WD-FP01
SCALE 1:200	DATE 30 MAR 17
DRAWN HH	CHECKED CHIA

THE OWNERSHIP OF THE COPYRIGHT IN THIS DRAWING IS RETAINED BY P&T CONSULTANTS PTE LTD WHOSE CONSENT MUST BE SOUGHT BEFORE ANY USE OR REPRODUCTION OF THE DRAWING OR ANY PART THEREOF CAN BE MADE.



LEGEND	DESCRIPTION
	2.0 kg ABC DRY CHEMICAL FIRE EXTINGUISHER WITH APPROVED PSB LABEL
	4.0 kg ABC DRY CHEMICAL FIRE EXTINGUISHER WITH APPROVED PSB LABEL
	FIRE ALARM & CALL MANUAL
	FIRE HOSEREEL
	DRY RISER WITH 2 NOS. OF STANDBY HOSE
	BREECHING INLET
	FIRE FIGHTING ACCESS
	1/2 HOUR FIRE RATED DOOR W/ PSB LABEL
	1 HOUR FIRE RATED DOOR W/ PSB LABEL
	2 HOUR FIRE RATED DOOR W/ PSB LABEL
	EXIT SIGN WITH DIRECTIONAL SIGN (COME WITH SELF BATTERY PACK)
	EXIT SIGN (COME WITH SELF BATTERY PACK)
	2 HOUR FIRE STOP

3RD STOREY PLAN
 1:100

AS BUILT DRAWING SUBMISSION

DATE SUBMITTED: 30 MAR 17 REFERENCE NO.:

This check is made to review the general conformance on the design intention, specifications and drawings of the project. This does not relieve the Contractor and Sub-Contractor of his contractual responsibilities to confirm and correlate dimensions on site, select fabrication process and techniques of construction, coordinate his work with all other trades and execute his work in accordance with the best standard practice and Local Building Regulations.

P & T CONSULTANTS PTE LTD, ARCHITECT

DATE RECEIVED: DATE RETURNED:

CHECKED BY: SUBMISSION NO.

Approved on Above Conditions Commented and Approved on Above Conditions

Resubmit Comments on Architectural Aspect only

Not in Order No Comment

P & T CONSULTANTS PTE LTD, C & S

DATE RECEIVED: DATE RETURNED:

CHECKED BY: SUBMISSION NO.

Approved on Above Conditions Commented and Approved on Above Conditions

Resubmit Comments on Architectural Aspect only

Not in Order No Comment

UNITED PROJECT CONSULTANTS PTE LTD

DATE RECEIVED: DATE RETURNED:

CHECKED BY: SUBMISSION NO.

Approved on Above Conditions Commented and Approved on Above Conditions

Resubmit Comments on Architectural Aspect only

Not in Order No Comment

FD CHAPMAN PTE LTD

DATE RECEIVED: DATE RETURNED:

CHECKED BY: SUBMISSION NO.

Approved on Above Conditions Commented and Approved on Above Conditions

Resubmit Comments on Architectural Aspect only

Not in Order No Comment

SHOP DRAWING ARE CHECKED FOR HIGHLIGHTED AREAS ONLY. UNLESS HIGHLIGHTED FOR DEVIATION FROM WORKING DRAWINGS, WE ASSUME THAT ALL DESIGN INTENTS & DIMENSIONAL CO-ORDINATIONS ARE COMPLIED WITH.

ARCHITECT

P & T CONSULTANTS PTE LTD
 24 RAFFLES PLACE
 #23-03 CLIFFORD CENTRE
 SINGAPORE 048621
 TEL : 6535 2011
 FAX : 6535 1283

CIVIL & STRUCTURAL ENGINEERS

P & T CONSULTANTS PTE LTD
 24 RAFFLES PLACE
 #13-03 CLIFFORD CENTRE
 SINGAPORE 048621
 TEL : 6535 2011
 FAX : 6535 1283

MECHANICAL & ELECTRICAL ENGINEERS

UNITED PROJECT CONSULTANTS PTE LTD
 432 BALESTIR ROAD
 #02-444 PUBLIC MANSION
 SINGAPORE 329813
 TEL : 6225 3300
 FAX : 6253 4106

INTERIOR DESIGN CONSULTANTS

7030 ANG MO KIO AVE 5
 #08-84 NORTHSTAR@AMK
 SINGAPORE 559880
 TEL : 6570 6377
 FAX : 6570 6355

MAIN CONTRACTOR

QING FENG CONSTRUCTION PTE LTD

 31 MANDAI ESTATE
 #07-09, INNOVATION PLACE
 TEL:(65) 6509 8936
 FAX:(65) 6509 8536
 Email: office@qingfeng.com.sg

SUB CONTRACTOR

PROJECT TITLE
 PROPOSED ERECTION OF A 4-STOREY COMMUNITY CLUB WITH A BASEMENT CARPARK ON LOT 5013V MK10 AT HILLVIEW AVENUE (BUKIT BATOK PLANNING AREA)

DRAWING TITLE
 2ND STOREY PLAN
 (AS BUILT DRAWING ON 30.03.17)

PROJECT NUMBER	DRAWING NUMBER
S 1170	WD-FP02
SCALE	DATE
1:100	30 MAR 17
DRAWN	CHECKED
HH	CHIA

THE OWNERSHIP OF THE COPYRIGHT IN THIS DRAWING IS RETAINED BY P&T CONSULTANTS PTE LTD. UNLESS CONSENT MUST BE SOUGHT BEFORE ANY USE OR REPRODUCTION OF THE DRAWING OR ANY PART THEREOF CAN BE MADE.

AS BUILT DRAWING SUBMISSION

DATE SUBMITTED: 30 MAR 17 REFERENCE NO.

This check is made to review the general conformance on the design intention, specifications and drawings of the project. This does not relieve the Contractor and Sub-Contractor of his contractual responsibilities to confirm and correlate dimensions on site, select fabrication process and techniques of construction, coordinate his work with all other trades and execute his work in accordance with the best standard practice and Local Building Regulations.

P&T CONSULTANTS PTE LTD, ARCHITECT

DATE RECEIVED: DATE RETURNED:
CHECKED BY: SUBMISSION NO.

Approved on Above Conditions Commented and Approved on Above Conditions
 Resubmit Comments on Architectural Aspect only
 Not in Order No Comment

P & T CONSULTANTS PTE LTD, C & S

DATE RECEIVED: DATE RETURNED:
CHECKED BY: SUBMISSION NO.

Approved on Above Conditions Commented and Approved on Above Conditions
 Resubmit Comments on Architectural Aspect only
 Not in Order No Comment

UNITED PROJECT CONSULTANTS PTE LTD

DATE RECEIVED: DATE RETURNED:
CHECKED BY: SUBMISSION NO.

Approved on Above Conditions Commented and Approved on Above Conditions
 Resubmit Comments on Architectural Aspect only
 Not in Order No Comment

FD CHAPMAN PTE LTD

DATE RECEIVED: DATE RETURNED:
CHECKED BY: SUBMISSION NO.

Approved on Above Conditions Commented and Approved on Above Conditions
 Resubmit Comments on Architectural Aspect only
 Not in Order No Comment

SHOP DRAWINGS ARE CHECKED FOR HIGHLIGHTED AREAS ONLY. UNLESS HIGHLIGHTED FOR DEVIATION FROM WORKING DRAWINGS, WE ASSUME THAT ALL DESIGN INTENTS & DIMENSIONAL COORDINATIONS ARE COMPLIED WITH.

ARCHITECT
P&T CONSULTANTS PTE LTD
24 RAFFLES PLACE
#23-00 CLIFFORD CENTRE
SINGAPORE 048621
TEL: 6535 2011
FAX: 6535 1283

CIVIL & STRUCTURAL ENGINEERS
P&T CONSULTANTS PTE LTD
24 RAFFLES PLACE
#13-03 CLIFFORD CENTRE
SINGAPORE 048621
TEL: 6535 2011
FAX: 6535 1283

MECHANICAL & ELECTRICAL ENGINEERS
UNITED PROJECT CONSULTANTS PTE LTD
432 BALESTIR ROAD
#02-444, PUBLIC MANSION
SINGAPORE 329813
TEL: 6225 3900
FAX: 6253 4106

INTERIOR DESIGN CONSULTANTS
QING FENG DESIGN
7030 ANG MO KIO AVE 5
#08-84 NORTHSTAR@AMK
SINGAPORE 569880
TEL: 6570 6377
FAX: 6570 6355

MAIN CONTRACTOR
QING FENG CONSTRUCTION PTE LTD
31 MANDAI ESTATE
#07-09, INNOVATION PLACE
TEL: (65) 6509 8936
FAX: (65) 6509 8526
Email: office@qingfeng.com.sg

SUB CONTRACTOR

PROJECT TITLE
PROPOSED ERECTION OF A 4-STORY COMMUNITY CLUB WITH A BASEMENT CARPARK ON LOT 5013V MK10 AT HILLVIEW AVENUE (BUKIT BATOK PLANNING AREA)

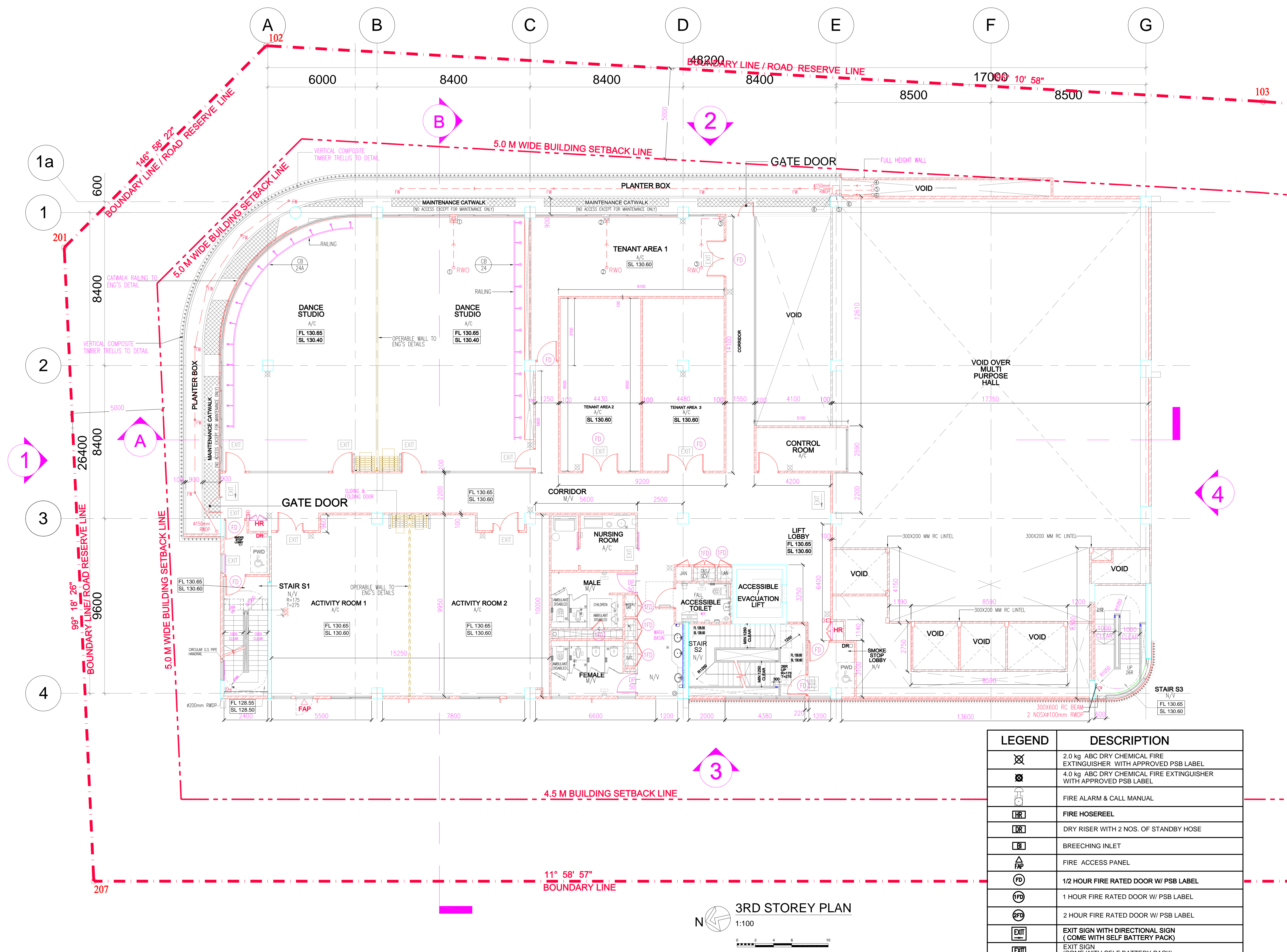
DRAWING TITLE
3RD STOREY PLAN
(AS BUILT DRAWING ON 30.03.2017)

PROJECT NUMBER
S 1170

DRAWING NUMBER
WD-FP03

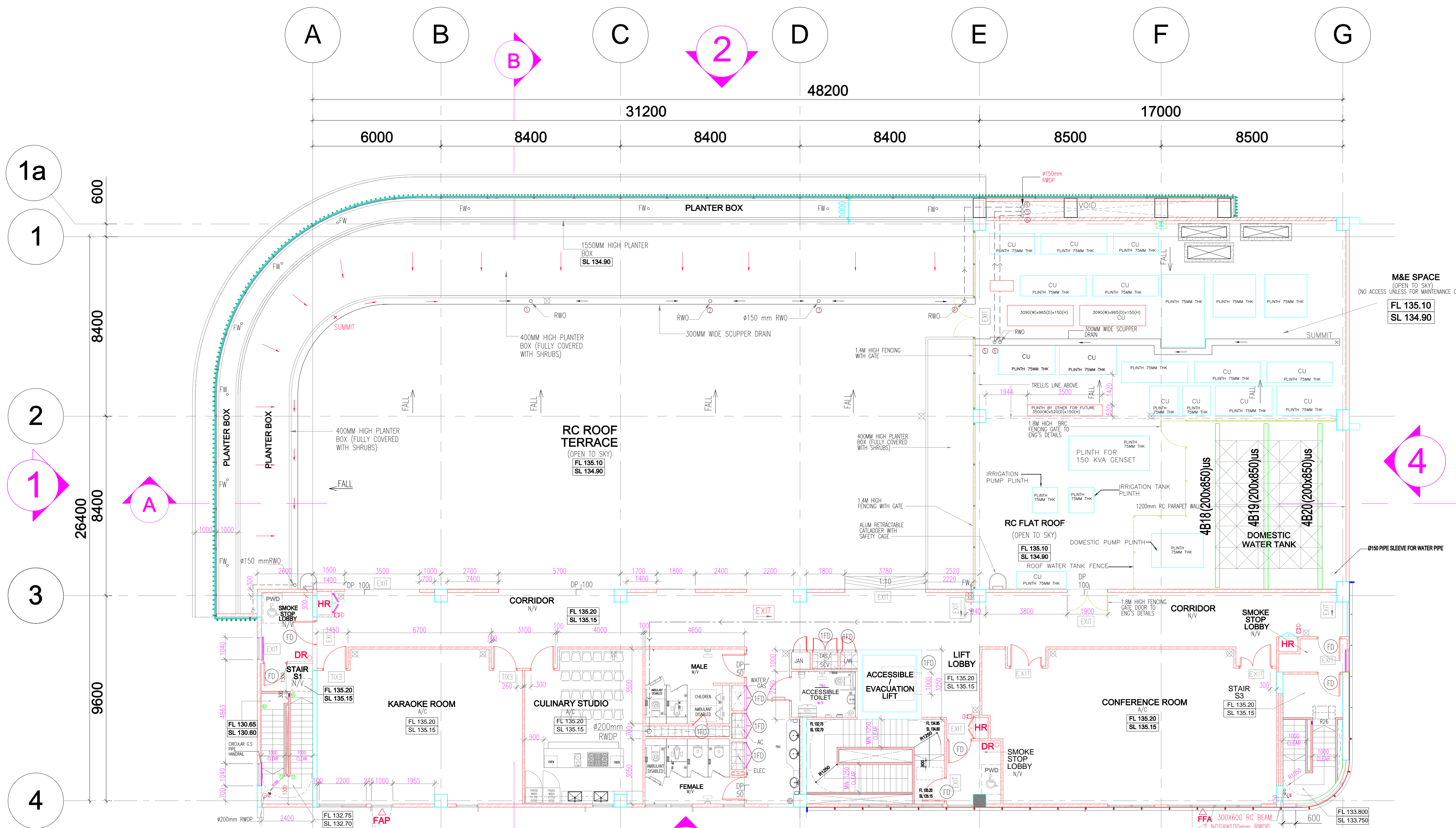
SCALE	DATE	DRAWN	CHECKED
1:100	30 MAR 17	HH	CHIA

THE OWNERSHIP OF THE COPYRIGHT IN THIS DRAWING IS RETAINED BY P&T CONSULTANTS PTE LTD WHOSE CONSENT MUST BE SOUGHT BEFORE ANY USE OR REPRODUCTION OF THE DRAWING OR ANY PART THEREOF CAN BE MADE.

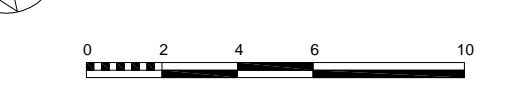


LEGEND	DESCRIPTION
	2.0 kg ABC DRY CHEMICAL FIRE EXTINGUISHER WITH APPROVED PSB LABEL
	4.0 kg ABC DRY CHEMICAL FIRE EXTINGUISHER WITH APPROVED PSB LABEL
	FIRE ALARM & CALL MANUAL
	FIRE HOSE REEL
	DRY RISER WITH 2 NOS. OF STANDBY HOSE
	BREECHING INLET
	FIRE ACCESS PANEL
	1/2 HOUR FIRE RATED DOOR W/ PSB LABEL
	1 HOUR FIRE RATED DOOR W/ PSB LABEL
	2 HOUR FIRE RATED DOOR W/ PSB LABEL
	EXIT SIGN WITH DIRECTIONAL SIGN (COME WITH SELF BATTERY PACK)
	EXIT SIGN (COME WITH SELF BATTERY PACK)
	2 HOUR FIRE STOP

3RD STOREY PLAN
1:100



4TH STOREY PLAN
1:100



LEGEND	DESCRIPTION
	2.0 kg ABC DRY CHEMICAL FIRE EXTINGUISHER WITH APPROVED PSB LABEL
	4.0 kg ABC DRY CHEMICAL FIRE EXTINGUISHER WITH APPROVED PSB LABEL
	FIRE ALARM & CALL MANUAL
	FIRE HOSEREEL
	DRY RISER WITH 2 NOS. OF STANDBY HOSE
	BREACHING INLET
	FIRE FIGHTING ACCESS
	1/2 HOUR FIRE RATED DOOR W/ PSB LABEL
	1 HOUR FIRE RATED DOOR W/ PSB LABEL
	2 HOUR FIRE RATED DOOR W/ PSB LABEL
	EXIT SIGN WITH DIRECTIONAL SIGN (COME WITH SELF BATTERY PACK)
	EXIT SIGN (COME WITH SELF BATTERY PACK)
	2 HOUR FIRE STOP

AS BUILT DRAWING SUBMISSION

DATE SUBMITTED 30 MAR 17	REFERENCE NO.
-----------------------------	---------------

This check is made to review the general conformance on the design intention, specifications and drawings of the project. This does not relieve the Contractor and Sub-Contractor of his contractual responsibilities to confirm and correlate dimensions on site, select fabrication process and techniques of construction, coordinate his work with all other trades and execute his work in accordance with the best standard practice and Local Building Regulations.

P&T CONSULTANTS PTE LTD, ARCHITECT

DATE RECEIVED:	DATE RETURNED:
CHECKED BY:	SUBMISSION NO.
<input type="checkbox"/> Approved on Above Conditions	<input type="checkbox"/> Commented and Approved on Above Conditions
<input type="checkbox"/> Resubmit	<input type="checkbox"/> Comments on Architectural Aspect only
<input type="checkbox"/> Not in Order	<input type="checkbox"/> No Comment

P & T CONSULTANTS PTE LTD, C & S

DATE RECEIVED:	DATE RETURNED:
CHECKED BY:	SUBMISSION NO.
<input type="checkbox"/> Approved on Above Conditions	<input type="checkbox"/> Commented and Approved on Above Conditions
<input type="checkbox"/> Resubmit	<input type="checkbox"/> Comments on Architectural Aspect only
<input type="checkbox"/> Not in Order	<input type="checkbox"/> No Comment

UNITED PROJECT CONSULTANTS PTE LTD

DATE RECEIVED:	DATE RETURNED:
CHECKED BY:	SUBMISSION NO.
<input type="checkbox"/> Approved on Above Conditions	<input type="checkbox"/> Commented and Approved on Above Conditions
<input type="checkbox"/> Resubmit	<input type="checkbox"/> Comments on Architectural Aspect only
<input type="checkbox"/> Not in Order	<input type="checkbox"/> No Comment

FD CHAPMAN PTE LTD

DATE RECEIVED:	DATE RETURNED:
CHECKED BY:	SUBMISSION NO.
<input type="checkbox"/> Approved on Above Conditions	<input type="checkbox"/> Commented and Approved on Above Conditions
<input type="checkbox"/> Resubmit	<input type="checkbox"/> Comments on Architectural Aspect only
<input type="checkbox"/> Not in Order	<input type="checkbox"/> No Comment

SHOP DRAWING ARE CHECKED FOR HIGHLIGHTED AREAS ONLY. UNLESS HIGHLIGHTED FOR DEVIATION FROM WORKING DRAWINGS WE ASSUME THAT ALL DESIGN INTENTS & DIMENSIONAL CO-ORDINATIONS ARE COMPLIED WITH.

ARCHITECT

P&T CONSULTANTS PTE LTD
24 RAFFLES PLACE
#23-00 CLIFFORD CENTRE
SINGAPORE 048621
TEL : 6535 2011
FAX : 6535 1283

CIVIL & STRUCTURAL ENGINEERS

P&T CONSULTANTS PTE LTD
24 RAFFLES PLACE
#13-03 CLIFFORD CENTRE
SINGAPORE 048621
TEL : 6535 2011
FAX : 6535 1283

MECHANICAL & ELECTRICAL ENGINEERS

UNITED PROJECT CONSULTANTS PTE LTD
432 BALESTIR ROAD
#02-444, PUBLIC MANSION
SINGAPORE 329613
TEL : 6225 3900
FAX : 6253 4106

INTERIOR DESIGN CONSULTANTS

7030 ANG MO KIO AVE 5
#08-84 NORTHSTAR@AMK
SINGAPORE 569880
TEL : 6570 6377
FAX : 6570 6355

MAIN CONTRACTOR

QING FENG CONSTRUCTION PTE LTD
31 MANDAI ESTATE
#07-09, INNOVATION PLACE
TEL: (65) 6509 8936
FAX: (65) 6509 8526
Email: office@qingfeng.com.sg

SUB CONTRACTOR

PROJECT TITLE

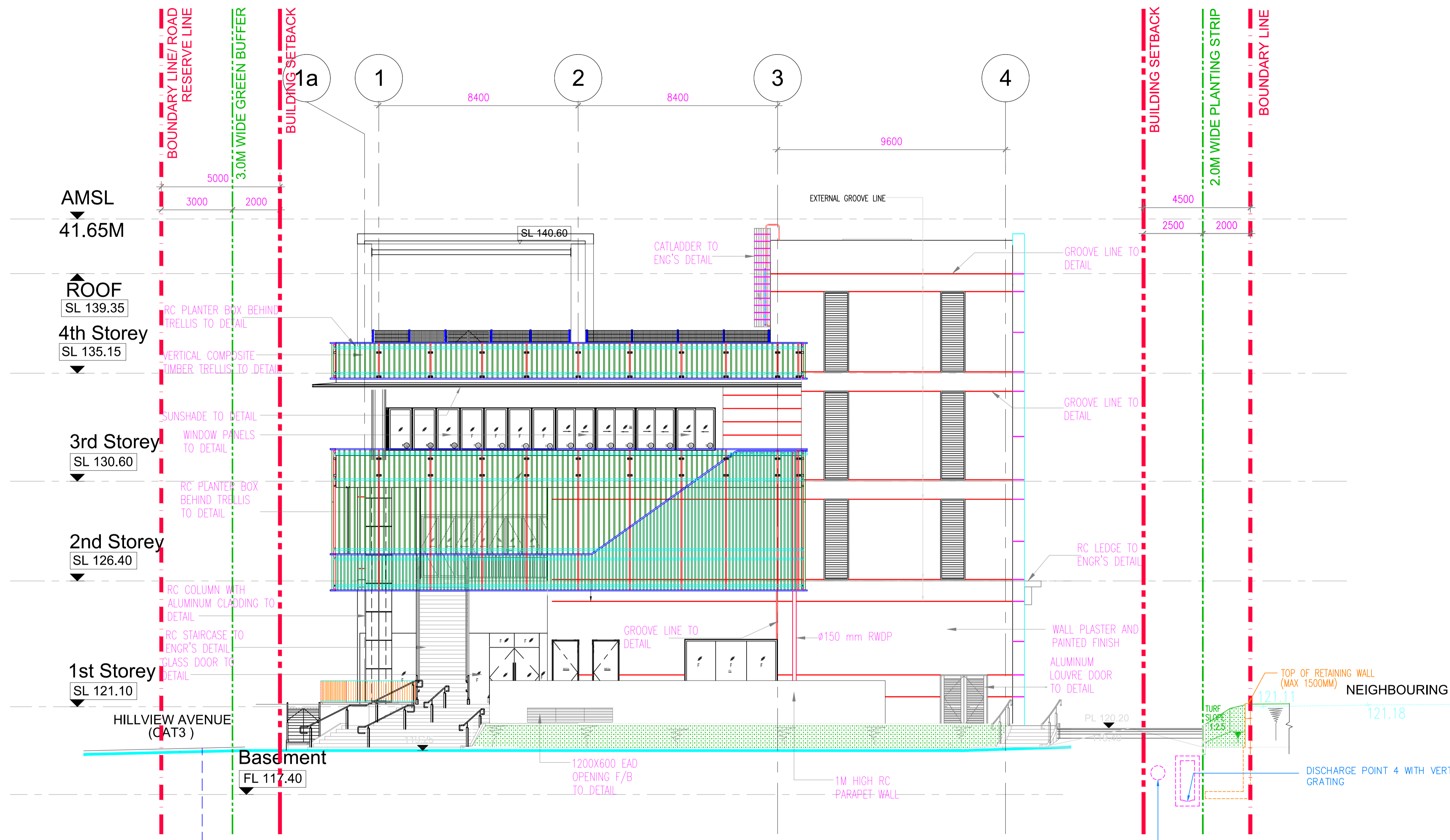
PROPOSED ERECTION OF A 4-STOREY COMMUNITY CLUB WITH A BASEMENT CARPARK ON LOT 5013V, MK10 AT HILLVIEW AVENUE (BUKIT BATOK PLANNING AREA)

DRAWING TITLE

4th STOREY PLAN
(ASBUILT DRAWING ON 30.03.2017)

PROJECT NUMBER S 1170	DRAWING NUMBER WD-FP04
SCALE 1:100	DATE 30 MAR 17
DRAWN HH	CHECKED CHIA

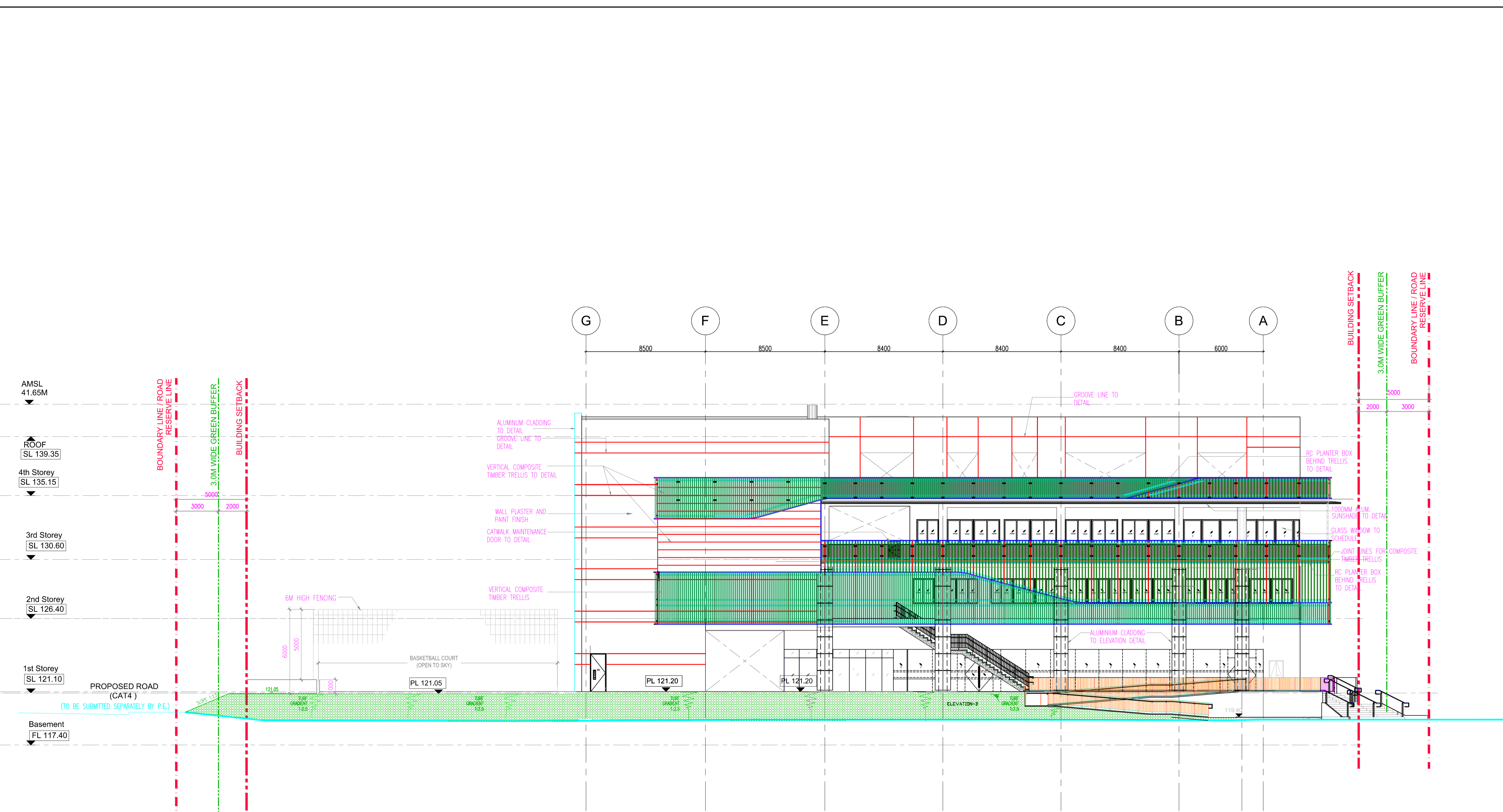
THE OWNERSHIP OF THE COPYRIGHT IN THIS DRAWING IS RETAINED BY P&T CONSULTANTS PTE LTD WHOSE CONSENT MUST BE SOUGHT BEFORE ANY USE OR REPRODUCTION OF THE DRAWING OR ANY PART THEREOF CAN BE MADE.



ELEVATION-1
SCALE : 1:100

NEW MH TO BE CONNECTED TO THE NEAREST EXTG. MH FID 257292 179084.

AS BUILT DRAWING SUBMISSION	
DATE SUBMITTED 17 FEB 17	REFERENCE NO.
This check is made to review the general conformance on the design intention, specifications and drawings of the project. This does not relieve the Contractor and Sub-Contractor of his contractual responsibilities to confirm and correlate dimensions on site, select fabrication process and techniques of construction, coordinate his work with all other trades and execute his work in accordance with the best standard practice and Local Building Regulations.	
P&T CONSULTANTS PTE LTD, ARCHITECT	
DATE RECEIVED:	DATE RETURNED:
CHECKED BY:	SUBMISSION NO.
<input type="checkbox"/> Approved on Above Conditions	<input type="checkbox"/> Commented and Approved on Above Conditions
<input type="checkbox"/> Resubmit	<input type="checkbox"/> Comments on Architectural Aspect only
<input type="checkbox"/> Not in Order	<input type="checkbox"/> No Comment
P&T CONSULTANTS PTE LTD, C & S	
DATE RECEIVED:	DATE RETURNED:
CHECKED BY:	SUBMISSION NO.
<input type="checkbox"/> Approved on Above Conditions	<input type="checkbox"/> Commented and Approved on Above Conditions
<input type="checkbox"/> Resubmit	<input type="checkbox"/> Comments on Architectural Aspect only
<input type="checkbox"/> Not in Order	<input type="checkbox"/> No Comment
UNITED PROJECT CONSULTANTS PTE LTD	
DATE RECEIVED:	DATE RETURNED:
CHECKED BY:	SUBMISSION NO.
<input type="checkbox"/> Approved on Above Conditions	<input type="checkbox"/> Commented and Approved on Above Conditions
<input type="checkbox"/> Resubmit	<input type="checkbox"/> Comments on Architectural Aspect only
<input type="checkbox"/> Not in Order	<input type="checkbox"/> No Comment
FD CHAPMAN PTE LTD	
DATE RECEIVED:	DATE RETURNED:
CHECKED BY:	SUBMISSION NO.
<input type="checkbox"/> Approved on Above Conditions	<input type="checkbox"/> Commented and Approved on Above Conditions
<input type="checkbox"/> Resubmit	<input type="checkbox"/> Comments on Architectural Aspect only
<input type="checkbox"/> Not in Order	<input type="checkbox"/> No Comment
SHOP DRAWING ARE CHECKED FOR HIGHLIGHTED AREAS ONLY. UNLESS HIGHLIGHTED FOR DEVIATION FROM WORKING DRAWINGS, WE ASSUME THAT ALL DESIGN INTENTS & DIMENSIONAL CO-ORDINATIONS ARE COMPLIED WITH.	
ARCHITECT	
P&T CONSULTANTS PTE LTD 24 RAFFLES PLACE #23-00 CLIFFORD CENTRE SINGAPORE 048621 TEL : 6535 2011 FAX : 6535 1283	
CIVIL & STRUCTURAL ENGINEERS	
P&T CONSULTANTS PTE LTD 24 RAFFLES PLACE #13-03 CLIFFORD CENTRE SINGAPORE 048621 TEL : 6535 2011 FAX : 6535 1283	
MECHANICAL & ELECTRICAL ENGINEERS	
UNITED PROJECT CONSULTANTS PTE LTD 432 BALESTIR ROAD #02-444, PUBLIC MANSION SINGAPORE 328813 TEL : 6225 3900 FAX : 6253 4106	
INTERIOR DESIGN CONSULTANTS	
7030 ANG MO KIO AVE 5 #08-84 NORTHSTAR@AMK SINGAPORE 569880 TEL : 6570 6377 FAX : 6570 6355	
MAIN CONTRACTOR	
QING FENG CONSTRUCTION PTE LTD 31 MANDAI ESTATE #07-09, INNOVATION PLACE TEL: (65) 6509 8936 FAX: (65) 6509 8526 Email: office@qingfeng.com.sg	
SUB CONTRACTOR	
PROJECT TITLE	
PROPOSED ERECTION OF A 4-STOREY COMMUNITY CLUB WITH A BASEMENT CARPARK ON LOT 5013V MK10 AT HILLVIEW AVENUE (BUKIT BATOK PLANNING AREA)	
DRAWING TITLE	
ELEVATION -1 (AS BUILT DRAWING ON 30.03.17)	
PROJECT NUMBER S 1170	DRAWING NUMBER WD-FEE 1
SCALE 1:100	DATE 30 MAR 17
DRAWN HH	CHECKED CHIA
THE OWNERSHIP OF THE COPYRIGHT IN THIS DRAWING IS RETAINED BY P&T CONSULTANTS PTE LTD WHOSE CONSENT MUST BE SOUGHT BEFORE ANY USE OR REPRODUCTION OF THE DRAWING OR ANY PART THEREOF CAN BE MADE.	



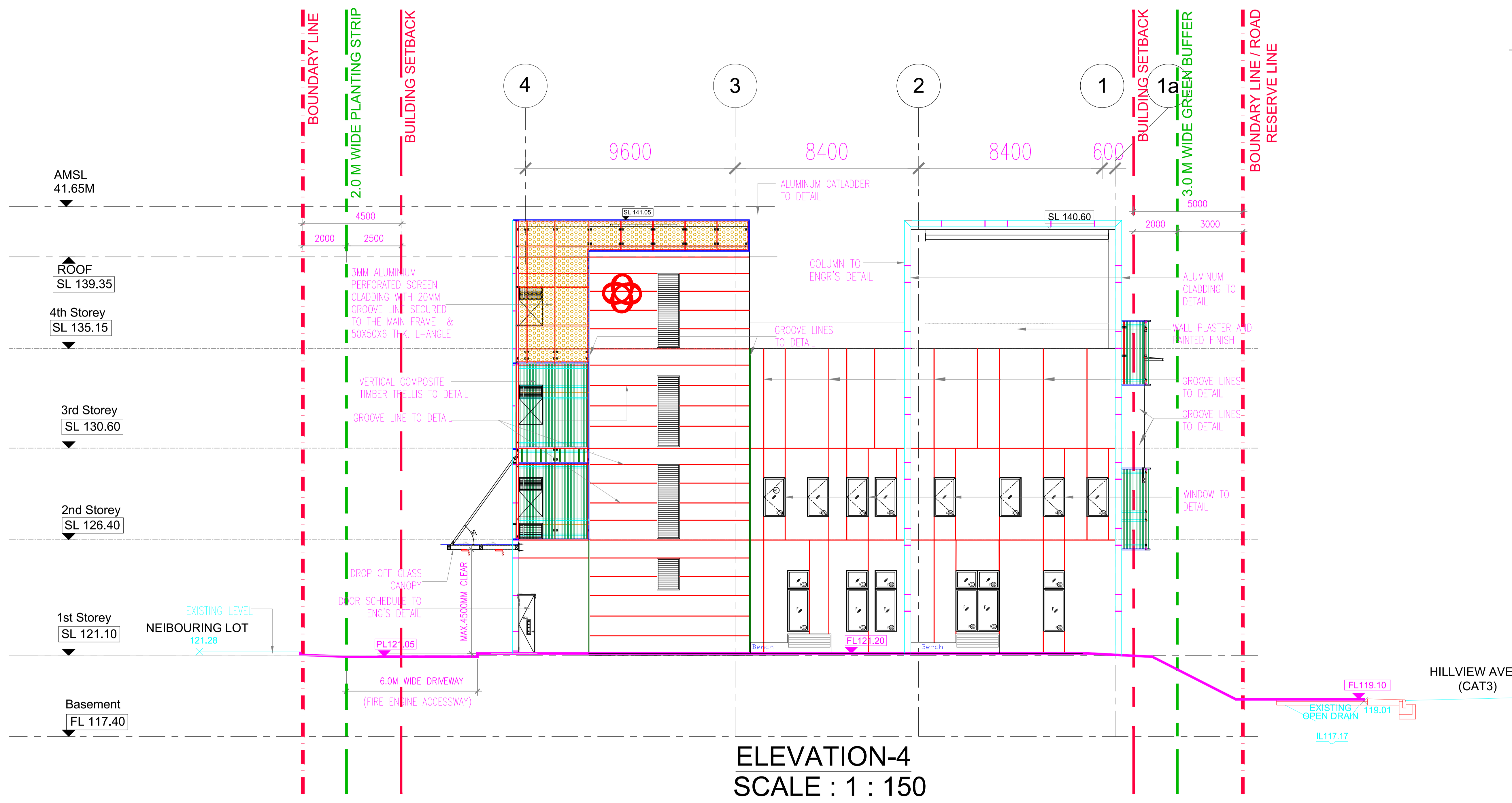
ELEVATION-2
SCALE : 1:150

AS BUILT DRAWING SUBMISSION	
DATE SUBMITTED 30 MAR 17	REFERENCE NO.
This check is made to review the general conformance on the design intention, specifications and drawings of the project. This does not relieve the Contractor and Sub-Contractor of his contractual responsibilities to confirm and correlate dimensions on site, select fabrication process and techniques of construction, coordinate his work with all other trades and execute his work in accordance with the best standard practice and Local Building Regulations.	
P&T CONSULTANTS PTE LTD, ARCHITECT	
DATE RECEIVED:	DATE RETURNED:
CHECKED BY:	SUBMISSION NO.
<input type="checkbox"/> Approved on Above Conditions	<input type="checkbox"/> Commented and Approved on Above Conditions
<input type="checkbox"/> Resubmit	<input type="checkbox"/> Comments on Architectural Aspect only
<input type="checkbox"/> Not in Order	<input type="checkbox"/> No Comment
P&T CONSULTANTS PTE LTD, C & S	
DATE RECEIVED:	DATE RETURNED:
CHECKED BY:	SUBMISSION NO.
<input type="checkbox"/> Approved on Above Conditions	<input type="checkbox"/> Commented and Approved on Above Conditions
<input type="checkbox"/> Resubmit	<input type="checkbox"/> Comments on Architectural Aspect only
<input type="checkbox"/> Not in Order	<input type="checkbox"/> No Comment
UNITED PROJECT CONSULTANTS PTE LTD	
DATE RECEIVED:	DATE RETURNED:
CHECKED BY:	SUBMISSION NO.
<input type="checkbox"/> Approved on Above Conditions	<input type="checkbox"/> Commented and Approved on Above Conditions
<input type="checkbox"/> Resubmit	<input type="checkbox"/> Comments on Architectural Aspect only
<input type="checkbox"/> Not in Order	<input type="checkbox"/> No Comment
FD CHAPMAN PTE LTD	
DATE RECEIVED:	DATE RETURNED:
CHECKED BY:	SUBMISSION NO.
<input type="checkbox"/> Approved on Above Conditions	<input type="checkbox"/> Commented and Approved on Above Conditions
<input type="checkbox"/> Resubmit	<input type="checkbox"/> Comments on Architectural Aspect only
<input type="checkbox"/> Not in Order	<input type="checkbox"/> No Comment
SHOP DRAWING ARE CHECKED FOR HIGHLIGHTED AREAS ONLY. UNLESS HIGHLIGHTED FOR DEVIATION FROM WORKING DRAWINGS, WE ASSUME THAT ALL DESIGN INTENTS & DIMENSIONAL COORDINATIONS ARE COMPLIED WITH.	
ARCHITECT	
P&T CONSULTANTS PTE LTD 24 RAFFLES PLACE #23-00 CLIFFORD CENTRE SINGAPORE 048621 TEL : 6535 2011 FAX : 6535 1283	
CIVIL & STRUCTURAL ENGINEERS	
P&T CONSULTANTS PTE LTD 24 RAFFLES PLACE #13-03 CLIFFORD CENTRE SINGAPORE 048621 TEL : 6535 2011 FAX : 6535 1283	
MECHANICAL & ELECTRICAL ENGINEERS	
UNITED PROJECT CONSULTANTS PTE LTD 432 BALESTIR ROAD #02-444, PUBLIC MANSION SINGAPORE 328813 TEL : 6225 3900 FAX : 6253 4106	
INTERIOR DESIGN CONSULTANTS	
 7030 ANG MO KIO AVE 5 #08-84 NORTHSTAR@AMK SINGAPORE 569880 TEL : 6570 6377 FAX : 6570 6355	
MAIN CONTRACTOR	
QING FENG CONSTRUCTION PTE LTD 31 MANDAI ESTATE #07-09, INNOVATION PLACE TEL: (65) 6509 8936 FAX: (65) 6509 8526 Email: office@qingfeng.com.sg	
SUB CONTRACTOR	
PROJECT TITLE	
PROPOSED ERECTION OF A 4-STOREY COMMUNITY CLUB WITH A BASEMENT CARPARK ON LOT 5013V MK10 AT HILLVIEW AVENUE (BUKIT BATOK PLANNING AREA)	
DRAWING TITLE	
ELEVATION -2 (AS BUILT DRAWING ON 30.03.17)	
PROJECT NUMBER S 1170	DRAWING NUMBER WD-FEE 2 A
SCALE 1:150	DATE 30 MAR 17
DRAWN HH	CHECKED CHIA
THE OWNERSHIP OF THE COPYRIGHT IN THIS DRAWING IS RETAINED BY P&T CONSULTANTS PTE LTD WHOSE CONSENT MUST BE SOUGHT BEFORE ANY USE OR REPRODUCTION OF THE DRAWING OR ANY PART THEREOF CAN BE MADE.	



ELEVATION-3
SCALE : 1 : 150

AS BUILT DRAWING SUBMISSION	
DATE SUBMITTED 30 MAR 17	REFERENCE NO.
This check is made to review the general conformance on the design intention, specifications and drawings of the project. This does not relieve the Contractor and Sub-Contractor of his contractual responsibilities to confirm and correlate dimensions on site, select fabrication process and techniques of construction, coordinate his work with all other trades and execute his work in accordance with the best standard practice and Local Building Regulations.	
P&T CONSULTANTS PTE LTD, ARCHITECT	
DATE RECEIVED:	DATE RETURNED:
CHECKED BY:	SUBMISSION NO.
<input type="checkbox"/> Approved on Above Conditions	<input type="checkbox"/> Commented and Approved on Above Conditions
<input type="checkbox"/> Resubmit	<input type="checkbox"/> Comments on Architectural Aspect only
<input type="checkbox"/> Not in Order	<input type="checkbox"/> No Comment
P&T CONSULTANTS PTE LTD, C & S	
DATE RECEIVED:	DATE RETURNED:
CHECKED BY:	SUBMISSION NO.
<input type="checkbox"/> Approved on Above Conditions	<input type="checkbox"/> Commented and Approved on Above Conditions
<input type="checkbox"/> Resubmit	<input type="checkbox"/> Comments on Architectural Aspect only
<input type="checkbox"/> Not in Order	<input type="checkbox"/> No Comment
UNITED PROJECT CONSULTANTS PTE LTD	
DATE RECEIVED:	DATE RETURNED:
CHECKED BY:	SUBMISSION NO.
<input type="checkbox"/> Approved on Above Conditions	<input type="checkbox"/> Commented and Approved on Above Conditions
<input type="checkbox"/> Resubmit	<input type="checkbox"/> Comments on Architectural Aspect only
<input type="checkbox"/> Not in Order	<input type="checkbox"/> No Comment
FD CHAPMAN PTE LTD	
DATE RECEIVED:	DATE RETURNED:
CHECKED BY:	SUBMISSION NO.
<input type="checkbox"/> Approved on Above Conditions	<input type="checkbox"/> Commented and Approved on Above Conditions
<input type="checkbox"/> Resubmit	<input type="checkbox"/> Comments on Architectural Aspect only
<input type="checkbox"/> Not in Order	<input type="checkbox"/> No Comment
SHOP DRAWING ARE CHECKED FOR HIGHLIGHTED AREAS ONLY. UNLESS HIGHLIGHTED FOR DEVIATION FROM WORKING DRAWINGS, WE ASSUME THAT ALL DESIGN INTENTS & DIMENSIONAL CO-ORDINATIONS ARE COMPLIED WITH.	
ARCHITECT	
P&T CONSULTANTS PTE LTD 24 RAFFLES PLACE #23-00 CLIFFORD CENTRE SINGAPORE 048621 TEL : 6535 2011 FAX : 6535 1283	
CIVIL & STRUCTURAL ENGINEERS	
P&T CONSULTANTS PTE LTD 24 RAFFLES PLACE #13-03 CLIFFORD CENTRE SINGAPORE 048621 TEL : 6535 2011 FAX : 6535 1283	
MECHANICAL & ELECTRICAL ENGINEERS	
UNITED PROJECT CONSULTANTS PTE LTD 432 BALESTIR ROAD #02-444, PUBLIC MANSION SINGAPORE 328813 TEL : 6225 3900 FAX : 6253 4106	
INTERIOR DESIGN CONSULTANTS	
7030 ANG MO KIO AVE 5 #08-84 NORTHSTAR@AMK SINGAPORE 569880 TEL : 6570 6377 FAX : 6570 6355	
MAIN CONTRACTOR	
QING FENG CONSTRUCTION PTE LTD 31 MANDAI ESTATE #07-09, INNOVATION PLACE TEL: (65) 6509 8936 FAX: (65) 6509 8526 Email: office@qingfeng.com.sg	
SUB CONTRACTOR	
PROJECT TITLE	
PROPOSED ERECTION OF A 4-STOREY COMMUNITY CLUB WITH A BASEMENT CARPARK ON LOT 5013V MK10 AT HILLVIEW AVENUE (BUKIT BATOK PLANNING AREA)	
DRAWING TITLE	
ELEVATION -3 (AS BUILT DRAWING ON 30.03.17)	
PROJECT NUMBER S 1170	DRAWING NUMBER WD-FEE 3
SCALE 1:150	DATE 30 MAR 17
DRAWN HH	CHECKED CHIA
THE OWNERSHIP OF THE COPYRIGHT IN THIS DRAWING IS RETAINED BY P&T CONSULTANTS PTE LTD WHOSE CONSENT MUST BE SOUGHT BEFORE ANY USE OR REPRODUCTION OF THE DRAWING OR ANY PART THEREOF CAN BE MADE.	



ELEVATION-4
SCALE : 1 : 150

AS BUILT DRAWING SUBMISSION	
DATE SUBMITTED 30 MAR 17	REFERENCE NO.
This check is made to review the general conformance on the design intention, specifications and drawings of the project. This does not relieve the Contractor and Sub-Contractor of his contractual responsibilities to confirm and correlate dimensions on site, select fabrication process and techniques of construction, coordinate his work with all other trades and execute his work in accordance with the best standard practice and Local Building Regulations.	
P&T CONSULTANTS PTE LTD, ARCHITECT	
DATE RECEIVED:	DATE RETURNED:
CHECKED BY:	SUBMISSION NO.
<input type="checkbox"/> Approved on Above Conditions	<input type="checkbox"/> Commented and Approved on Above Conditions
<input type="checkbox"/> Resubmit	<input type="checkbox"/> Comments on Architectural Aspect only
<input type="checkbox"/> Not in Order	<input type="checkbox"/> No Comment
P & T CONSULTANTS PTE LTD, C & S	
DATE RECEIVED:	DATE RETURNED:
CHECKED BY:	SUBMISSION NO.
<input type="checkbox"/> Approved on Above Conditions	<input type="checkbox"/> Commented and Approved on Above Conditions
<input type="checkbox"/> Resubmit	<input type="checkbox"/> Comments on Architectural Aspect only
<input type="checkbox"/> Not in Order	<input type="checkbox"/> No Comment
UNITED PROJECT CONSULTANTS PTE LTD	
DATE RECEIVED:	DATE RETURNED:
CHECKED BY:	SUBMISSION NO.
<input type="checkbox"/> Approved on Above Conditions	<input type="checkbox"/> Commented and Approved on Above Conditions
<input type="checkbox"/> Resubmit	<input type="checkbox"/> Comments on Architectural Aspect only
<input type="checkbox"/> Not in Order	<input type="checkbox"/> No Comment
FD CHAPMAN PTE LTD	
DATE RECEIVED:	DATE RETURNED:
CHECKED BY:	SUBMISSION NO.
<input type="checkbox"/> Approved on Above Conditions	<input type="checkbox"/> Commented and Approved on Above Conditions
<input type="checkbox"/> Resubmit	<input type="checkbox"/> Comments on Architectural Aspect only
<input type="checkbox"/> Not in Order	<input type="checkbox"/> No Comment
SHOP DRAWING ARE CHECKED FOR HIGHLIGHTED AREAS ONLY. UNLESS HIGHLIGHTED FOR DEVIATION FROM WORKING DRAWINGS, WE ASSUME THAT ALL DESIGN INTENTS & DIMENSIONAL COORDINATIONS ARE COMPLIED WITH.	
ARCHITECT	
P&T CONSULTANTS PTE LTD 24 RAFFLES PLACE #23-00 CLIFFORD CENTRE SINGAPORE 048621 TEL : 6535 2011 FAX : 6535 1283	
CIVIL & STRUCTURAL ENGINEERS	
P&T CONSULTANTS PTE LTD 24 RAFFLES PLACE #13-03 CLIFFORD CENTRE SINGAPORE 048621 TEL : 6535 2011 FAX : 6535 1283	
MECHANICAL & ELECTRICAL ENGINEERS	
UNITED PROJECT CONSULTANTS PTE LTD 432 BALESTIR ROAD #02-444, PUBLIC MANSION SINGAPORE 328813 TEL : 6225 3900 FAX : 6253 4106	
INTERIOR DESIGN CONSULTANTS	
7030 ANG MO KIO AVE 5 #08-84 NORTHSTAR@AMK SINGAPORE 569880 TEL : 6570 6377 FAX : 6570 6355	
MAIN CONTRACTOR	
QING FENG CONSTRUCTION PTE LTD 31 MANDAI ESTATE #07-09, INNOVATION PLACE TEL: (65) 6509 8936 FAX: (65) 6509 8526 Email: office@qingfeng.com.sg	
SUB CONTRACTOR	
PROJECT TITLE	
PROPOSED ERECTION OF A 4-STOREY COMMUNITY CLUB WITH A BASEMENT CARPARK ON LOT 5013V MK10 AT HILLVIEW AVENUE (BUKIT BATOK PLANNING AREA)	
DRAWING TITLE	
ELEVATION -4 (AS BUILT DRAWING ON 30.03.17)	
PROJECT NUMBER S 1170	DRAWING NUMBER WD-FEE 4
SCALE 1:100	DATE 30 MAR 17
DRAWN HH	CHECKED CHIA
THE OWNERSHIP OF THE COPYRIGHT IN THIS DRAWING IS RETAINED BY P&T CONSULTANTS PTE LTD WHOSE CONSENT MUST BE SOUGHT BEFORE ANY USE OR REPRODUCTION OF THE DRAWING OR ANY PART THEREOF CAN BE MADE.	

This check is made to review the general conformance on the design intention, specifications and drawings of the project. This does not relieve the Contractor and Sub-Contractor of his contractual responsibilities to confirm and correlate dimensions on site, select fabrication process and techniques of construction, coordinate his work with all other trades and execute his work in accordance with the best standard practice and Local Building Regulations.

P&T CONSULTANTS PTE LTD, ARCHITECT

DATE RECEIVED: DATE RETURNED:

CHECKED BY: SUBMISSION NO.

- Approved on Above Conditions
- Resubmit
- Not in Order
- Commented and Approved on Above Conditions
- Comments on Architectural Aspect only
- No Comment

P&T CONSULTANTS PTE LTD, C & S

DATE RECEIVED: DATE RETURNED:

CHECKED BY: SUBMISSION NO.

- Approved on Above Conditions
- Resubmit
- Not in Order
- Commented and Approved on Above Conditions
- Comments on Architectural Aspect only
- No Comment

UNITED PROJECT CONSULTANTS PTE LTD

DATE RECEIVED: DATE RETURNED:

CHECKED BY: SUBMISSION NO.

- Approved on Above Conditions
- Resubmit
- Not in Order
- Commented and Approved on Above Conditions
- Comments on Architectural Aspect only
- No Comment

FD CHAPMAN PTE LTD

DATE RECEIVED: DATE RETURNED:

CHECKED BY: SUBMISSION NO.

- Approved on Above Conditions
- Resubmit
- Not in Order
- Commented and Approved on Above Conditions
- Comments on Architectural Aspect only
- No Comment

SHOP DRAWING ARE CHECKED FOR HIGHLIGHTED AREAS ONLY. UNLESS HIGHLIGHTED FOR DEVIATION FROM WORKING DRAWINGS, WE ASSUME THAT ALL DESIGN INTENTS & DIMENSIONAL COORDINATIONS ARE COMPLIED WITH.

ARCHITECT

P&T CONSULTANTS PTE LTD
 24 RAFFLES PLACE
 #23-03 CLIFFORD CENTRE
 SINGAPORE 048621
 TEL: 6535 2011
 FAX: 6535 1283

CIVIL & STRUCTURAL ENGINEERS

P&T CONSULTANTS PTE LTD
 24 RAFFLES PLACE
 #13-03 CLIFFORD CENTRE
 SINGAPORE 048621
 TEL: 6535 2011
 FAX: 6535 1283

MECHANICAL & ELECTRICAL ENGINEERS

UNITED PROJECT CONSULTANTS PTE LTD
 432 BALESTIR ROAD
 #02-444, PUBLIC MANSION
 SINGAPORE 328813
 TEL: 6225 3900
 FAX: 6253 4106

INTERIOR DESIGN CONSULTANTS

7030 ANG MO KIO AVE 5
 #08-84 NORTHSTAR@AMK
 SINGAPORE 569880
 TEL: 6570 6377
 FAX: 6570 6355

MAIN CONTRACTOR

QING FENG CONSTRUCTION PTE LTD
 31 MANDAI ESTATE
 #07-09, INNOVATION PLACE
 TEL: (65) 6509 8936
 FAX: (65) 6509 8526
 Email: office@qingfeng.com.sg

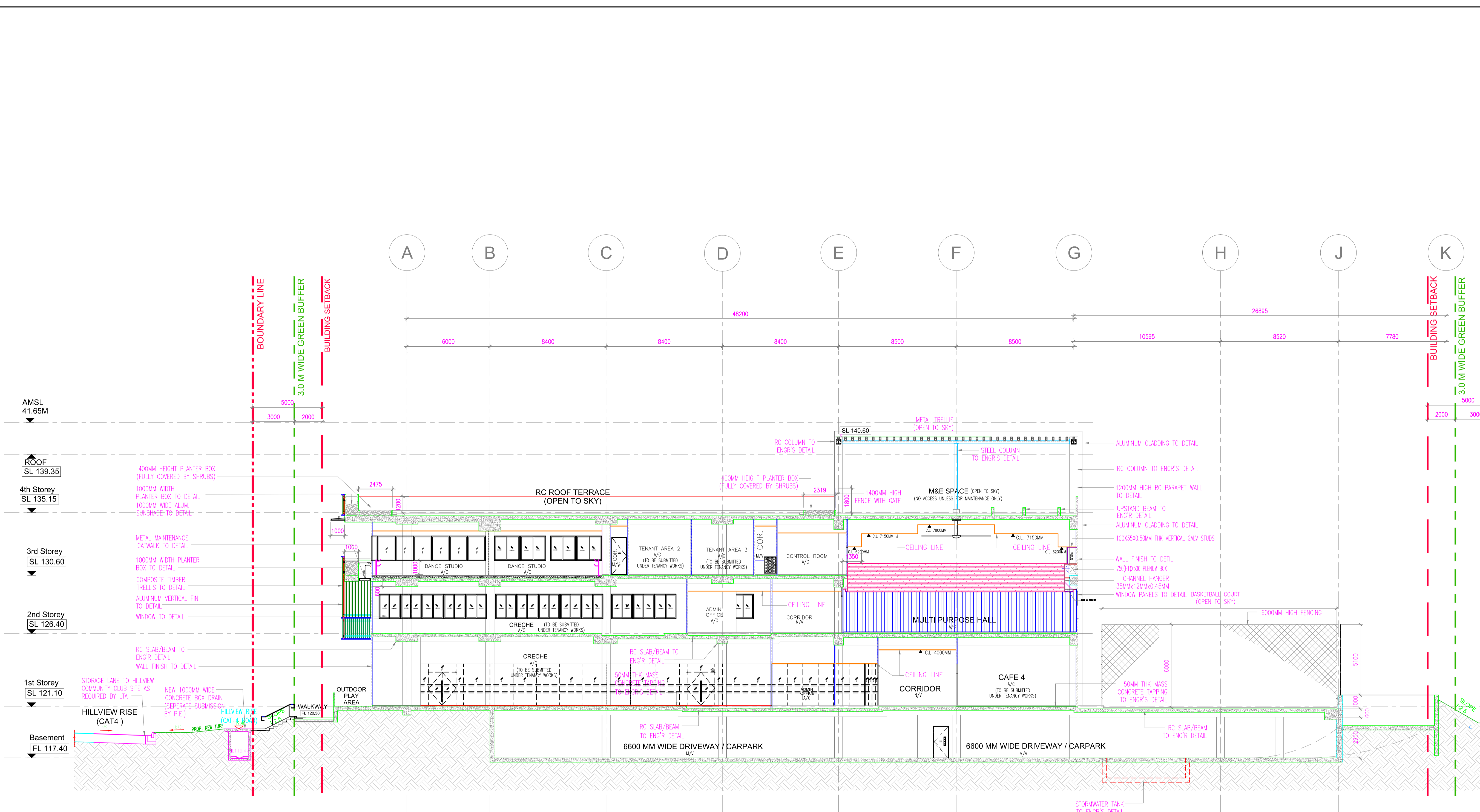
SUB CONTRACTOR

PROJECT TITLE
PROPOSED ERECTION OF A 4-STORY COMMUNITY CLUB WITH A BASEMENT CARPARK ON LOT 5013V MK10 AT HILLVIEW AVENUE (BUKIT BATOK PLANNING AREA)

DRAWING TITLE
SECTION A-A (AS BUILT DRAWING ON 30.03.17)

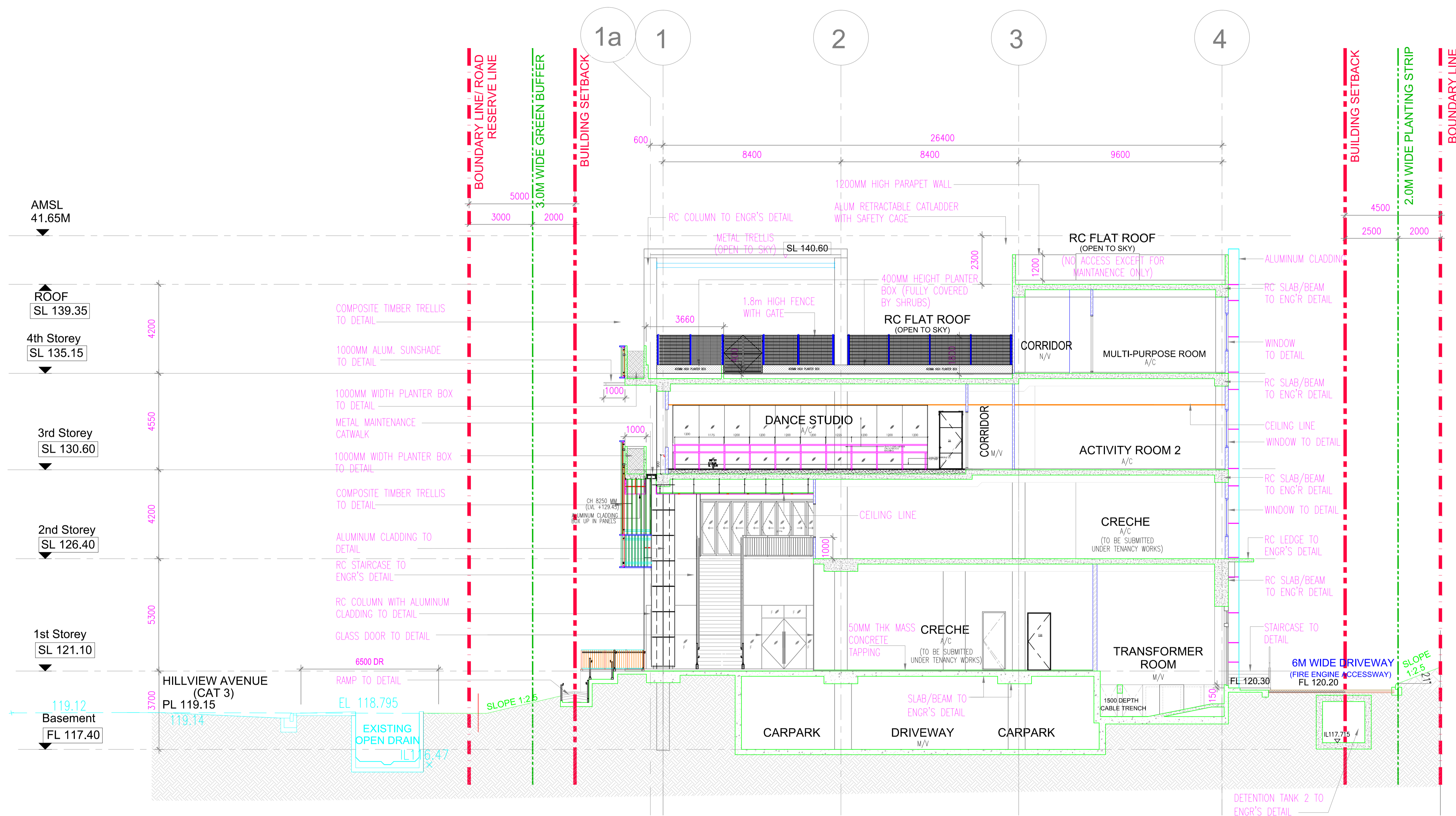
PROJECT NUMBER S 1170	DRAWING NUMBER WD-FPAA A
SCALE 1:150	DATE 30 MAR 17
DRAWN HH	CHECKED CHIA

THE OWNERSHIP OF THE COPYRIGHT IN THIS DRAWING IS RETAINED BY P&T CONSULTANTS PTE LTD WHOSE CONSENT MUST BE SOUGHT BEFORE ANY USE OR REPRODUCTION OF THE DRAWING OR ANY PART THEREOF CAN BE MADE.



SECTION A-A

SCALE 1:150



SECTION B-B

SCALE 1:100

AS BUILT DRAWING SUBMISSION			
DATE SUBMITTED	REFERENCE NO.		
30 MAR 17			
This check is made to review the general conformance on the design intention, specifications and drawings of the project. This does not relieve the Contractor and Sub-Contractor of his contractual responsibilities to confirm and correlate dimensions on site, select fabrication process and techniques of construction, coordinate his work with all other trades and execute his work in accordance with the best standard practice and Local Building Regulations.			
P&T CONSULTANTS PTE LTD, ARCHITECT			
DATE RECEIVED:	DATE RETURNED:		
CHECKED BY:	SUBMISSION NO.		
<input type="checkbox"/> Approved on Above Conditions	<input type="checkbox"/> Commented and Approved on Above Conditions		
<input type="checkbox"/> Resubmit	<input type="checkbox"/> Comments on Architectural Aspect only		
<input type="checkbox"/> Not in Order	<input type="checkbox"/> No Comment		
P & T CONSULTANTS PTE LTD, C & S			
DATE RECEIVED:	DATE RETURNED:		
CHECKED BY:	SUBMISSION NO.		
<input type="checkbox"/> Approved on Above Conditions	<input type="checkbox"/> Commented and Approved on Above Conditions		
<input type="checkbox"/> Resubmit	<input type="checkbox"/> Comments on Architectural Aspect only		
<input type="checkbox"/> Not in Order	<input type="checkbox"/> No Comment		
UNITED PROJECT CONSULTANTS PTE LTD			
DATE RECEIVED:	DATE RETURNED:		
CHECKED BY:	SUBMISSION NO.		
<input type="checkbox"/> Approved on Above Conditions	<input type="checkbox"/> Commented and Approved on Above Conditions		
<input type="checkbox"/> Resubmit	<input type="checkbox"/> Comments on Architectural Aspect only		
<input type="checkbox"/> Not in Order	<input type="checkbox"/> No Comment		
FD CHAPMAN PTE LTD			
DATE RECEIVED:	DATE RETURNED:		
CHECKED BY:	SUBMISSION NO.		
<input type="checkbox"/> Approved on Above Conditions	<input type="checkbox"/> Commented and Approved on Above Conditions		
<input type="checkbox"/> Resubmit	<input type="checkbox"/> Comments on Architectural Aspect only		
<input type="checkbox"/> Not in Order	<input type="checkbox"/> No Comment		
SHOP DRAWING ARE CHECKED FOR HIGHLIGHTED AREAS ONLY. UNLESS HIGHLIGHTED FOR DEVIATION FROM WORKING DRAWINGS, WE ASSUME THAT ALL DESIGN INTENTS & DIMENSIONAL CO-ORDINATIONS ARE COMPLIED WITH.			
ARCHITECT			
P&T CONSULTANTS PTE LTD 24 RAFFLES PLACE #23-03 CLIFFORD CENTRE SINGAPORE 048621 TEL : 6535 2011 FAX : 6535 1283			
CIVIL & STRUCTURAL ENGINEERS			
P&T CONSULTANTS PTE LTD 24 RAFFLES PLACE #13-03 CLIFFORD CENTRE SINGAPORE 048621 TEL : 6535 2011 FAX : 6535 1283			
MECHANICAL & ELECTRICAL ENGINEERS			
UNITED PROJECT CONSULTANTS PTE LTD 432 BALESTIR ROAD #02-444, PUBLIC MANSION SINGAPORE 328813 TEL : 6225 3900 FAX : 6253 4106			
INTERIOR DESIGN CONSULTANTS			
7030 ANG MO KIO AVE 5 #08-84 NORTHSTAR@AMK SINGAPORE 569880 TEL : 6570 6377 FAX : 6570 6355			
MAIN CONTRACTOR			
QING FENG CONSTRUCTION PTE LTD 31 MANDAI ESTATE #07-09, INNOVATION PLACE TEL: (65) 6509 8936 FAX: (65) 6509 8526 Email: office@qingfeng.com.sg			
SUB CONTRACTOR			
PROJECT TITLE			
PROPOSED ERECTION OF A 4-STOREY COMMUNITY CLUB WITH A BASEMENT CARPARK ON LOT 5013V MK10 AT HILLVIEW AVENUE (BUKIT BATOK PLANNING AREA)			
DRAWING TITLE			
SECTION B-B (AS BUILT DRAWING ON 30.03.17)			
PROJECT NUMBER	DRAWING NUMBER		
S 1170	WD-FPBB		
SCALE	DATE	DRAWN	CHECKED
1:100	30 MAR 17	HH	CHIA
THE OWNERSHIP OF THE COPYRIGHT IN THIS DRAWING IS RETAINED BY P&T CONSULTANTS PTE LTD WHOSE CONSENT MUST BE SOUGHT BEFORE ANY USE OR REPRODUCTION OF THE DRAWING OR ANY PART THEREOF CAN BE MADE.			